



THE RESIDENCES AT
MONT BLANC

SUITES

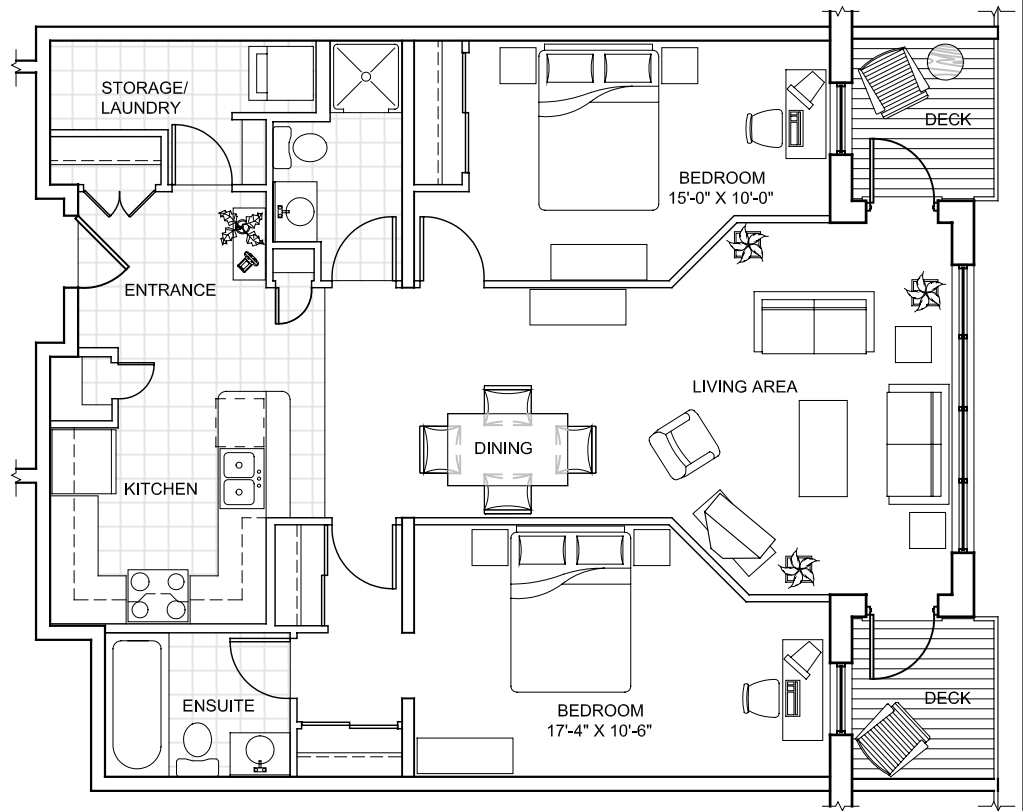
104, 204, 304, 405
&
112, 212, 312, 412

(reflected mirror layout)

D

SUITE FEATURES

- 1126 Sq. ft.
- 2 BEDROOMS
- 2 BATHROOMS
- STORAGE ROOM
- KITCHEN PENINSULA c/w
RAISED EATING COUNTER
- 5 APPLIANCES
- 6 FOOT SOAKER TUB
- SHOWER STALL
- EXTERIOR DECKS



2 BEDROOM

POLYCORP

CONTACT INFORMATION

www.ifyoulivehere.com ph. 902-431-9912
www.plycorp.ca fax. 902-431-9923

ADDRESS

3805 & 3807 Mont Blanc Terrace
Halifax, Nova Scotia